



Violet Road, London, E3

BUTLER  STAG





**Guide Price £350,000 - £375,000**

**Situated in the sought-after Cubix building, just moments from Devons Road DLR, this spacious 720 Sq/Ft two-bedroom, two-bathroom apartment offers modern living in the heart of Bow.**



## Leasehold

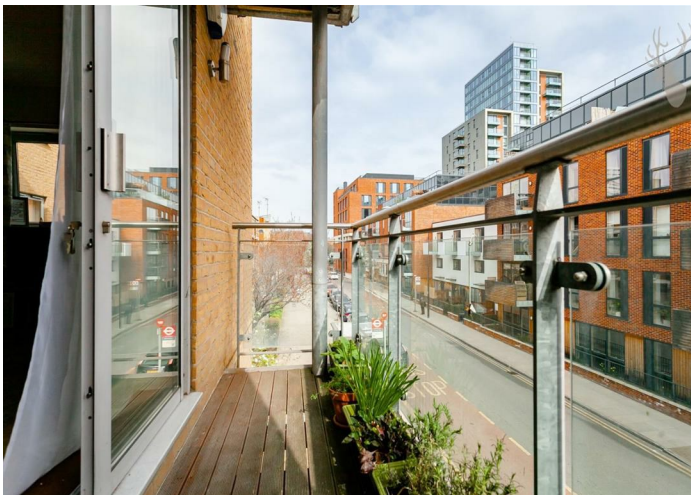
- Second Floor Apartment
- Two Bathrooms
- Two Bedrooms
- Devons Road DLR Close By
- Chain Free
- Private Balcony
- 720 Sq/Ft Internal Living Space
- Lift Access To All Levels
- EWS1 Compliant
- Landscaped Gardens

The property features a private balcony and access to beautifully landscaped communal gardens, providing a peaceful retreat from city life. With generous interiors and a well-designed layout, this apartment blends comfort, style, and convenience in a vibrant East London location.

Comprising an open plan living and kitchen area with integrated appliances. A generous sized principal bedroom with fitted wardrobes and en-suite, second double bedroom, contemporary bathroom and useful storage spaces complete the property.

Cubix Building is a secure development with an audio-entry system and lift access to all levels.

Violet Road is ideally located being a moments' walk to Devons Road (DLR) and Langdon Park (DLR) stations as well as Bromley-by-Bow (District and Hammersmith & City) tube station. The property is also close to many green spaces & cycle paths including Langdon Park, Three Mills Park, Limehouse Canal & The Olympic Park.



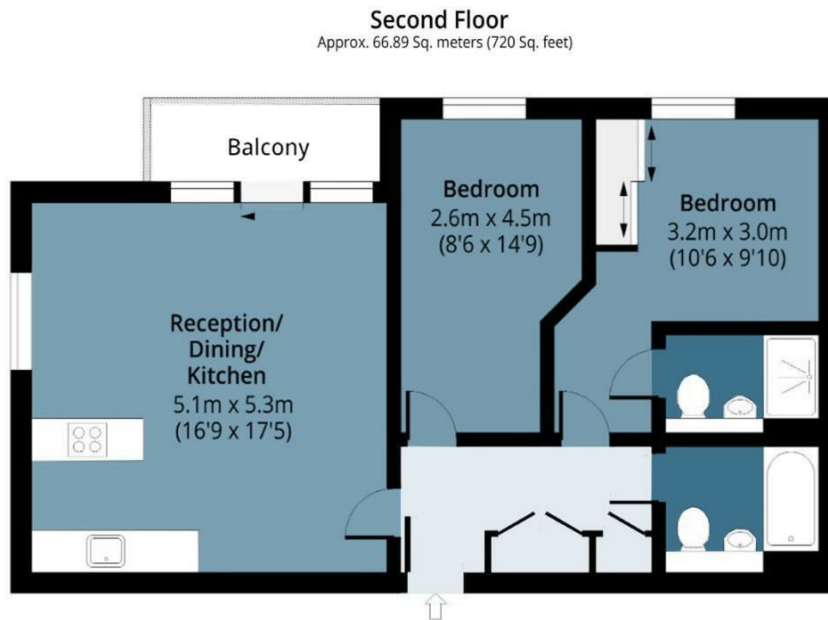




## Cubix Building, Violet Road

Approx. Gross Internal 66.89 Area Sq M ( 720 Sq Ft )

BUTLER & STAG



Measurements are approximate and for illustration purposes only. While we do not doubt the accuracy and completeness, we advise you conduct a careful independent assessment of the property to determine monetary value.  
© @modephoto.uk www.modephoto.co.uk

**IMPORTANT NOTICE** - These particulars have been prepared in good faith and they are not intended to constitute part of an offer or contract. We have not performed a structural survey on this property and the services, appliances and specific fittings have not been tested. All photographs, measurements, floor plans and distances referred to are given as a guide and should not be relied upon.

BUTLER & STAG

☎ 020 8102 1236

🏠 508 Roman Road, Bow, London, E3 5LU

✉ bow@butlerandstag.com

[www.butlerandstag.uk](http://www.butlerandstag.uk)